



# MARSH LAKE LOCAL AREA PLAN

March 2021

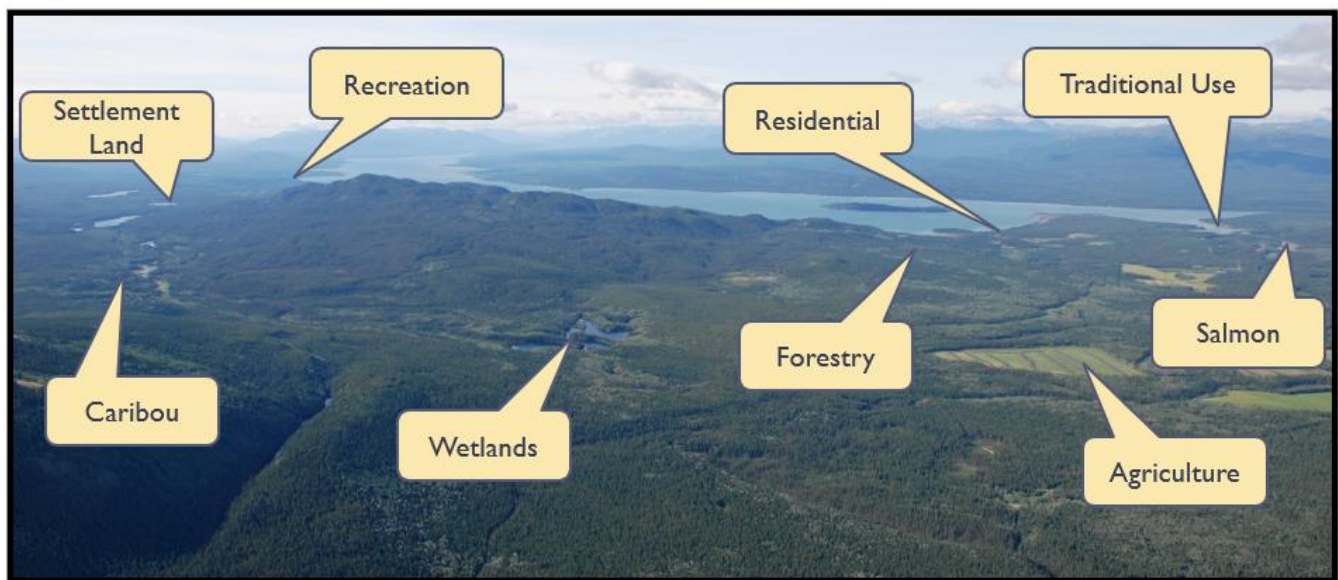


Carcross/Tagish First Nation (C/TFN) and Kwanlin Dün First Nation (KDFN) are working on a local area plan for Marsh Lake in partnership with Yukon government.

## WHAT ARE LOCAL AREA PLANS?

The need for local area planning is recognized in our *Self-Government Agreements*. These plans guide how lands in rural Yukon communities are developed, managed and protected. They include maps and policies that designate lands for different uses (residential, agricultural, community use, environmental protection).

The plans also include recommendations for how activities on public lands can respect community values such as for forestry, mining, recreation and tourism.



## WHERE IS THE PLANNING AREA?

The planning area covers about 375 square kilometers on the north shore of Marsh Lake. It extends from Judas Creek to Lewes River Bridge, and north to Michie Creek. It applies to C/TFN and KDFN Settlement Lands, public lands, and private lands in neighborhoods like Judas Creek, New Constabulary, Old Constabulary, Army Beach and M'Clintock Valley Road.

## WHAT IS THE PROCESS?

A draft plan for Marsh Lake was completed in 2016 between KDFN and YG, but was never approved. Last year, C/TFN, KDFN and YG agreed to work together to review and update the 2016 draft plan. We are aiming to have a final plan approved by spring 2022.

This year, we are reaching out to C/TFN and KDFN families to get your input on the 2016 plan. What do you like? What should be changed? What is missing? You are the community experts, and we need your help to make this plan a success!

## WHAT IS IN THE 2016 DRAFT PLAN?

THE VISION STATEMENT summarizes the kind of future the community wants for Marsh Lake:

***In the year 2030, the Marsh Lake Local Area is a rural community with clean water and healthy fish and wildlife populations. People enjoy the local environment, have a chance to work locally and have access to basic local services. First Nation citizens and residents are connected with their cultural ties in the area and have a vibrant presence on the land.***

GUIDING PRINCIPLES reflect core values of the community and are used to draft plan policy:

**CARE FOR THE ENVIRONMENT:** Respect the natural environment and ecosystems.

**COMMUNITY CULTURE:** Foster and promote the rich First Nation history and traditional use of the area as well as the culture of the local community.

**RURAL LIFESTYLE:** Affirm and foster the unique rural lifestyle and community spirit.

**COMMUNITY SUSTAINABILITY:** Promote the efficient use of global and local resources.

**SELF-SUFFICIENCY:** Promote the production of local goods and services.

A land use map and policies identify what types of land uses are acceptable and what rules apply. Once the plan is approved, all land decisions made by C/TFN or KDFN on Settlement Lands, or YG on non-Settlement Lands must conform to the plan. Highlights from the 2016 draft plan include:

- More than **85% of all lands are managed for environmental, cultural or recreational values.** Protection of caribou and salmon habitat, wetlands, and old-growth forest are key management objectives.
- **Cultural and traditional use activities** are supported anywhere on Settlement Land.
- **New KDFN residential subdivisions** could be considered in Judas Creek, New Constabulary and M'Clintock Valley Road.
- **C/TFN Settlement Lands have not been designated** for any uses in the 2016 plan, something that will be changed for the final plan.

## WHAT IS HAPPENING NOW?

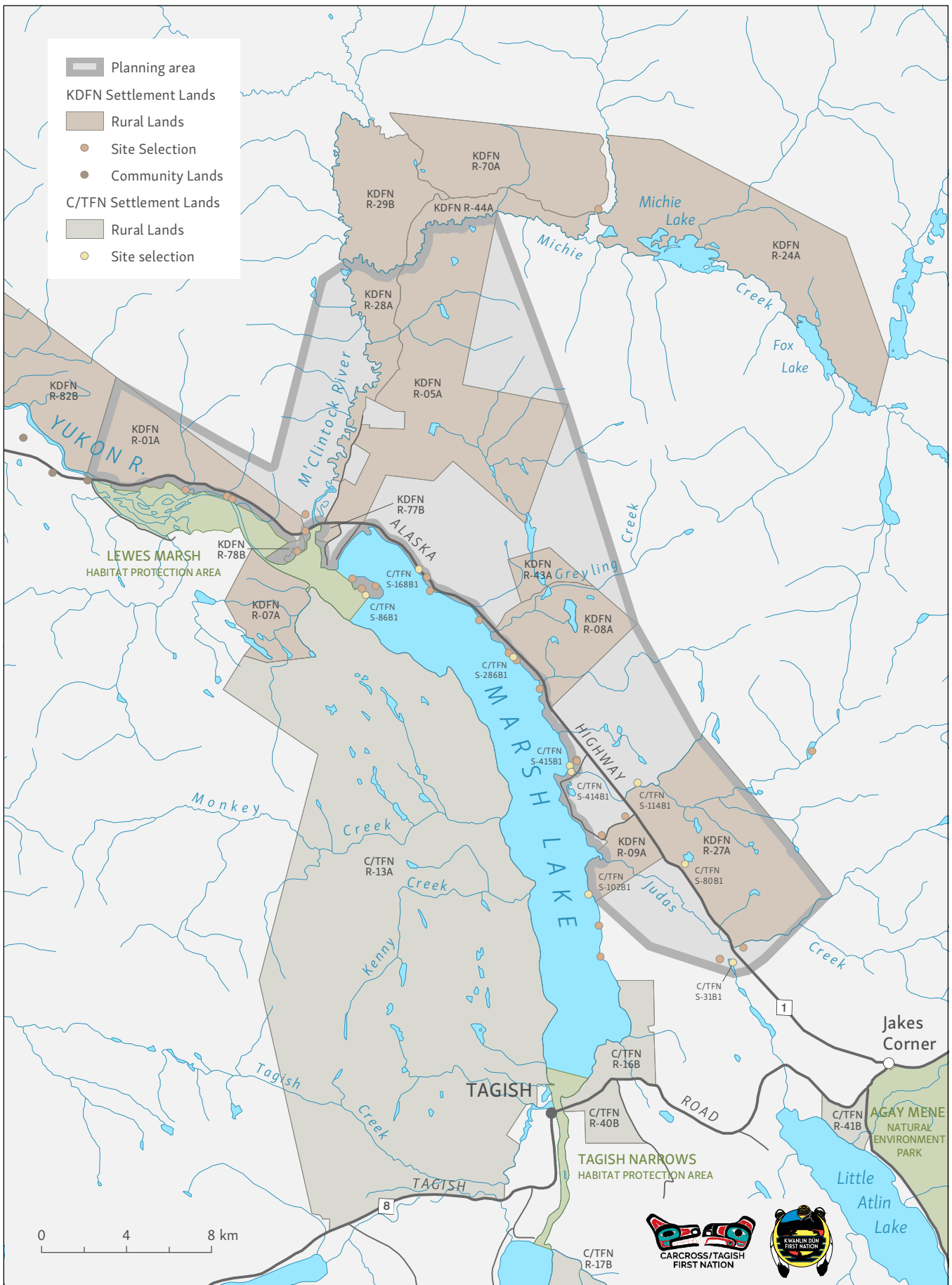
View the draft plan or an interactive land use map at: [yukon.ca/marsh-lake-local-area-planning](http://yukon.ca/marsh-lake-local-area-planning) and visit C/TFN and KDFN website and Facebook pages for more information on upcoming events.

Contact C/TFN or KDFN land planners to asked questions and to share your ideas. We are looking forward to hearing from you!

---

**Doris Dreyer**, Carcross/Tagish First Nation  
236-795-4280  
doris.dreyer@ctfn.ca

**Roy Neilson**, Kwanlin Dün First Nation  
867-332-1717  
roy.neilson@kdfn.net



Marsh Lake Local Area Plan