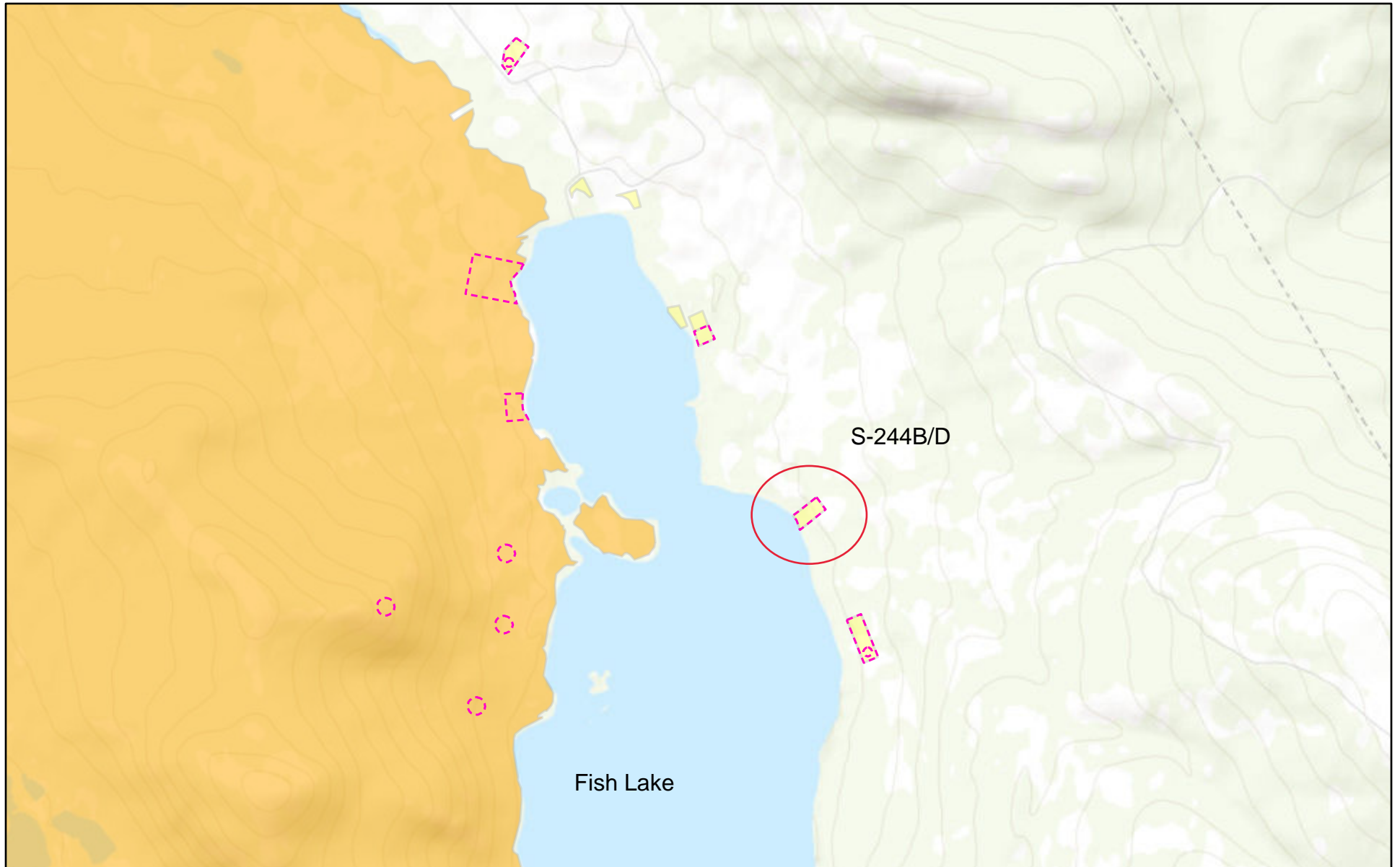


S-244B/D Location



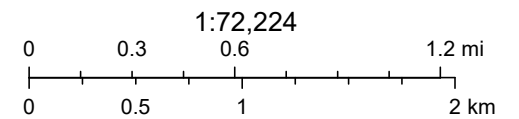
6/8/2022, 1:01:31 PM

KDFN Settlement Land  EOI (2020-01-07)

 Site selection

 KDFN Traditional Territory

 Rural block



Sources: Esri, HERE, Garmin, Intermap, increment P Corp., GEBCO, USGS, FAO, NPS, NRCAN, GeoBase, IGN, Kadaster NL, Ordnance Survey, Esri



Shape

- Draw On Map ▶
- Import Coordinates ▶
- Edit Coordinates ▶
- Advanced Tools ▶

Coordinate System: GCS_NAD83

*** Official Area:** 1.9991 Hectares [Copy Calculated Area](#)

Calculated Area: 1.9974 Ha

Derived Shape: [Not a derived shape](#)

Legal Description:

Parts: Part 1

Area: 1.9974 Ha

	Latitude	Longitude	
1	60° 37' 57.95" N	135° 12' 39.12" W	
2	60° 37' 55.41" N	135° 12' 35.06" W	
3	60° 37' 51.10" N	135° 12' 46.23" W	
4	60° 37' 51.51" N	135° 12' 46.51" W	
5	60° 37' 51.75" N	135° 12' 46.72" W	
6	60° 37' 52.48" N	135° 12' 47.12" W	
7	60° 37' 53.07" N	135° 12' 47.50" W	